

## Unit 5.



어디에 가요?

eodie gayo

Where are you going?

## Unit 5.

**R** eodie gayo **E** Where are you going? **K** 어디에 가요?

**Topic** Where are you going?

**Objective** Students are able to ask where the person is going and answer it by using the appropriate expressions.

### Key Words

Romanisation	English	Korean
eodi	where	어디
gachi	together	같이
ucheguk	post office	우체국
byeongwon	hospital	병원
yeonghwagwan	movie theater	영화관
jip	home	집
dongmurwon	zoo	동물원
gyohoe	church	교회
eunhaeng	bank	은행
hakgyo	school	학교
suyeongjang	swimming pool	수영장

### Model Conversation 1

Romanisation	English	Korean
A: eodie gayo	A: Where are you going?	A: 어디에 가요?
B: ____e gayo	B: I am going to ____.	B: ____에 가요.
A: jeodo ____egayo	A: I am also going to ____.	A: 저도 ____에 가요.
B: gachi gayo	B: Let's go together.	B: 같이 가요.

## Unit 5.

**R**eodie gayo **E**Where are you going? **K**어디에 가요?

### Model Conversation 2

Romanisation	English	Korean
A: eodie gayo	A: Where are you going?	A: 어디에 가요?
B: ____e gayo	B: I am going to ____.	B: ____에 가요.
A: jeoneun ____e gayo	A: I am going to ____.	A: 저는 ____에 가요.
B: annyeonghi gaseyo	B: Good bye.	B: 안녕히 가세요.
A: annyeonghi gaseyo	A: Good bye.	A: 안녕히 가세요.

### Processes/Activities/Strategies

#### • New vocabs (2\_U5R1)

- Learn the names of places using picture cards.
- Play Swat: Teacher calls out a word, students will swat the matching picture.
- Play Swat: 4-5 students per team. Take turns to be the caller and the rest will play swat.

#### • Role play (2\_U5R2)

- Learn Model Conversations. Use the new words to make their own conversations.
- Pair up students, ask each other the conversation 1, 2.
- Ask some pairs to present their conversation.

#### • Finding the same destination

- Each student draws a place card (2\_U5R1). Walk around the classroom and ask other students where he/she is going. If you go to the same place, use conversation 1 and stay together. If you go to a different place, use Model Conversation 2 and keep asking other students.
- The team who finds all the members will win the game.

#### • Extension activities

- Let's write - Writing new vocabularies in Korean (2\_U5E1)
- Let's find - Finding new vocabularies in Korean (2\_U5E2)

## Unit 5.

R eodie gayo E Where are you going? K 어디에 가요?

### 2\_U5R1

### The names of places



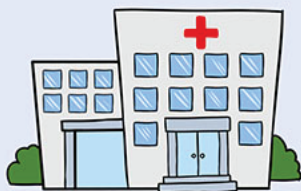
ucheguk



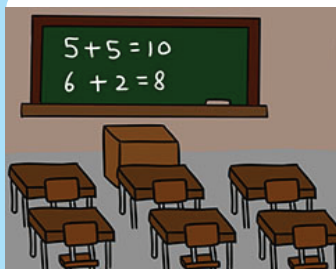
dongmurwon



gyohoe



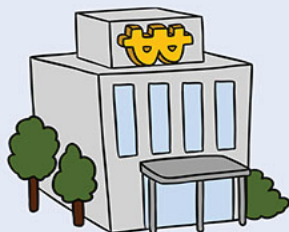
byeongwon



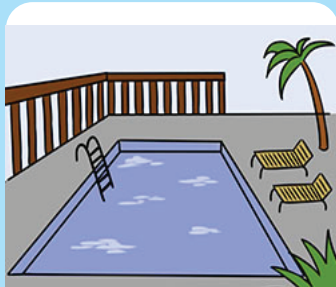
hakgyo



jip



eunhaeng



suyeongjang



yeonghwagwan

## Unit 5.

R eodie gayo E Where are you going? K 어디에 가요?

### 2\_U5R2

### Model conversation

#### Model Conversation 1

A: eodie gayo (Where are you going?)

B: \_\_\_\_\_e gayo (I am going to \_\_\_\_\_.)

A: jeodo \_\_\_\_\_e gayo (I am also going to \_\_\_\_\_.)

B: gachi gayo (Let's go together.)

#### Model Conversation 2

A: eodie gayo (Where are you going?)

B: \_\_\_\_\_e gayo (I am going to \_\_\_\_\_.)

A: jeoneun \_\_\_\_\_e gayo (I am going to \_\_\_\_\_.)

B: annyeonghi gaseyo (Good bye.)

A: annyeonghi gaseyo (Good bye.)

## Unit 5.

R eodie gayo E Where are you going? K 어디에 가요?

### 2\_U5E1

### Let's write

어디 eodi	어디			
같이 gachi	같이			
우체국 ucheguk	우체국			
병원 byeonwon	병원			
영화관 yeonghwagwan	영화관			
집 jip	집			
동물원 dongmurwon	동물원			
교회 gyohoe	교회			
은행 eunhaeng	은행			
학교 hakgyo	학교			
수영장 suyeongjang	수영장			

## Unit 5.

R eodie gayo E Where are you going? K 어디에 가요?

### 2\_U5E2

Let's find

수	영	장	공	교	원	국
아	화	어	행	니	회	디
시	관	우	장	호	경	병
우	같	병	체	니	가	원
한	학	이	소	국	물	영
디	교	구	나	동	치	교
은	행	혁	교	어	디	집

어디, 같이, 우체국, 병원, 영화관, 집,  
동물원, 교회, 은행, 학교, 수영장

Notes



-----

-----

-----

-----

-----

-----

-----

-----

-----

-----

-----

-----